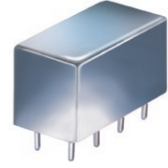


X2 Frequency Multiplier

50Ω Output 0.1 to 300 MHz

RK-3+



CASE STYLE: A01
PRICE: \$20.20 ea. QTY (1-9)

+ RoHS compliant in accordance with EU Directive (2002/95/EC)

The +Suffix has been added in order to identify RoHS Compliance. See our web site for RoHS Compliance methodologies and qualifications.

Maximum Ratings

Operating Temperature	-55°C to 100°C
Storage Temperature	-55°C to 100°C
RF Input Power	200mW

Permanent damage may occur if any of these limits are exceeded.

Pin Connections

INPUT	1,3,4^
OUTPUT	8
GROUND	2,5,6,7
CASE GROUND	2

^ pins must be connected together externally

Features

- low conversion loss, 11 dB typ.
- hermetic case

Applications

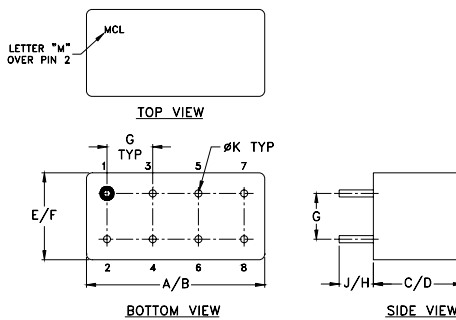
- synthesizers
- local oscillators
- military, hi-rel applications

Electrical Specifications

MULTIPLICATION FACTOR	FREQUENCY (MHz)		INPUT POWER (dBm)		CONVERSION LOSS (dB)		*HARMONIC OUTPUT (dBc)					
	F1 Input	F2 Output	Min.	Max.	Typ.	Max.	F1		F3		F4	
2	0.05-50	0.1-100	0	13	11.0	17.0	40	28	45	30	16	8
	50-150	100-300	0	13	11.5	15.0	35	20	40	20	16	12

* Harmonics of input frequency below the power level of F2

Outline Drawing

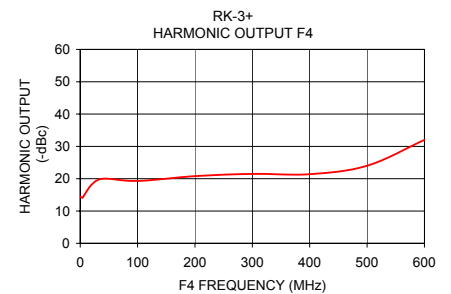
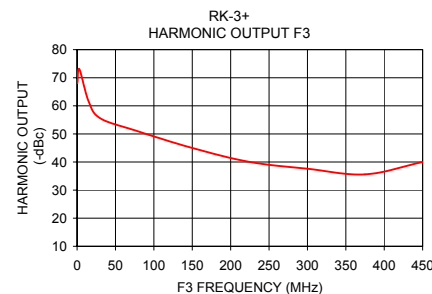
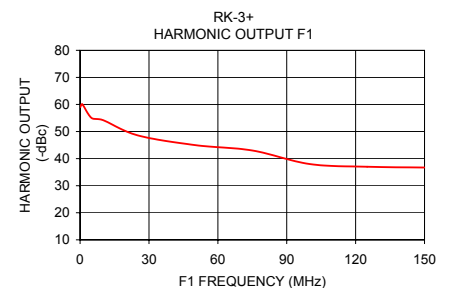
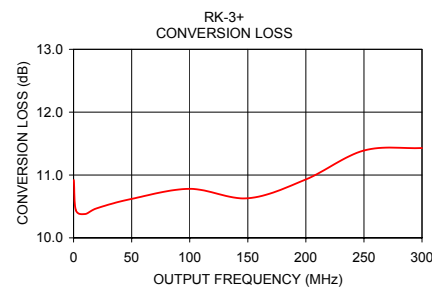


Typical Performance Data

Input Frequency (MHz)	Conversion Loss (dB) F2	F1	Harmonic Output (-dBc) F3	F4
0.10	10.92	59.00	68.00	14.40
1.00	10.44	60.00	73.00	14.20
5.00	10.38	55.00	61.60	18.20
10.00	10.47	54.20	55.60	20.00
25.00	10.62	48.60	51.30	19.30
50.00	10.78	45.00	45.00	20.80
75.00	10.63	43.00	40.00	21.50
100.00	10.93	38.00	37.60	21.40
125.00	11.39	37.00	35.60	24.00
150.00	11.43	36.70	40.00	32.00

Outline Dimensions (Inch / mm)

A	B	C	D	E	F
.770	.800	.385	.400	.370	.400
19.56	20.32	9.78	10.16	9.40	10.16
G	H	J	K	wt	
.200	.20	.14	.031	grams	
5.08	5.08	3.56	0.79	5.2	



Mini-Circuits®
ISO 9001 ISO 14001 AS 9100 CERTIFIED
IF/RF MICROWAVE COMPONENTS

For detailed performance specs & shopping online see web site

P.O. Box 350166, Brooklyn, New York 11235-0003 (718) 934-4500 Fax (718) 332-4661 The Design Engineers Search Engine Provides ACTUAL Data Instantly at minicircuits.com

Notes: 1. Performance and quality attributes and conditions not expressly stated in this specification sheet are intended to be excluded and do not form a part of this specification sheet. 2. Electrical specifications and performance data contained herein are based on Mini-Circuit's applicable established test performance criteria and measurement instructions. 3. The parts covered by this specification sheet are subject to Mini-Circuits standard limited warranty and terms and conditions (collectively, "Standard Terms"); Purchasers of this part are entitled to the rights and benefits contained therein. For a full statement of the Standard Terms and the exclusive rights and remedies thereunder, please visit Mini-Circuits' website at www.minicircuits.com/MCLStore/terms.jsp.

REV. C
M126372
RK-3+
AD/CP/AM
100215